

Model 173 - 3 Trunk Ringer Matrix

INSTALLATION

Fig. 1: Three Trunks, One Ringer

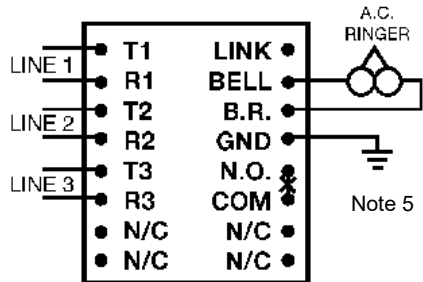
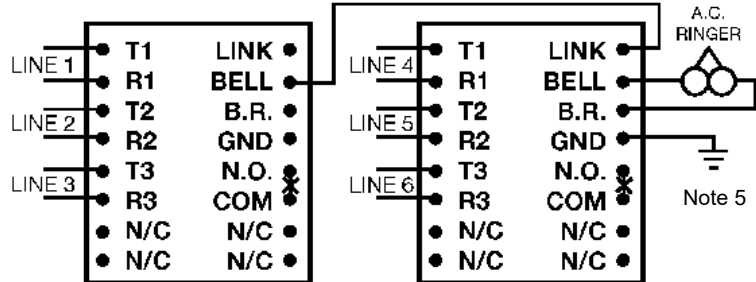


Fig. 2: Six Trunks, One Ringer



1. Tip (+) and Ring (-) are polarity sensitive and must be tied down as shown.
2. Contacts 'N.O.' and 'COM.' operate on ringing signal. These dry contacts can be used to drive auxiliary alerters.
3. For 4 lines and up, see Fig. 2.
4. N/C = No Connection
B.R. = Bell Return
5. GND must be connected to a good 'earth ground'.
6. A.C. Ringer: Dees Model 196 'Stinger 90' or equivalent.

SPECIFICATIONS

Electrical:	<u>Min.</u>	<u>Max.</u>	<u>Units</u>
Ring Detection Voltage	70	130	VAC
R.E.N.		1.4 B	
Contact Rating (Normally Open)		2	Amps

Caution: Contact protection required when driving inductive loads.

Environmental:	(Note: Intended for indoor use only)		
Temperature	-40	70	°C
Humidity	0	95	%RH

Mechanical:	
Length	12.7 cm (5 inches)
Width (including mounting tabs)	12.7 cm (5 inches)
Height	3.8 cm (1.5 inches)

Certification:	
FCC Part 68	FCN8E3-71872-KX-N
UL1459	ETL: 65926

ETL is a Nationally Recognized Testing Laboratory (NRTL)

