

THE RINGERS

ve been providing ringing
as for over 20 years.

er 90

ired
phone line
outdoor use
ne



er 24

ct closure



S /T193/TAI-0704BC

barrel connector
spade connectors
spade connectors
ill operate up
(CRI-376's)



R MATRIX

atrices allow
e central
mon ringer.

e Matrix ine Matrix

one common ringer
" closure upon

er for more than



Adapters for Customizing



CSI-380 Serial Interface



CTA-369 Centrex Terminal Adapter



CRI-376 Centrex Recording Interface



DSI-375 Meridian Custom Ringer



CLE-373 Centrex
Loop Extender

the

Meridian Digital Centrex Serial Interface

The CSI-380 is a serial interface, which passes Calling Line ID, and all other signaling on an MDC line, via a serial port to a PC. Full access to all Meridian Digital Centrex services and features are accessible, plus you can send and receive MDC signaling.

Adapt your Meridian Digital Centrex lines for analog connections

Here's an economical way to operate analog equipment on MDC lines. The CTA-369 lets you directly connect modems, secure phones, card readers, auto dialers, answering machines, fax machines and more. Save the cost of additional lines.

Recording line selectability on MBS sets

Record only those lines you choose to on your MBS set. The CRI-376 is programmable as to which line appearance will be recorded, provides a "contact closure" upon detection of an "off-hook" condition, plus other recording flexibilities.

Make your Meridian Business Set ring the way you want!

The DSI-375 gives you lots of ringing options plus ten distinctive ringing choices so you'll have complete control over the way your P-phone (Meridian Business Set) rings.

- connects to external loud ringer (model 198) through normally open contacts
- change the "splash tone" to normal ringing
- make your phone ring even when you're off hook
- set up "hold recall" to ring, plus much more custom functionality

Increase the operating range of Northern Telecom's DMS-100 switch up to 70%

With this loop extender you can increase the range of Meridian Digital Centrex service by 70% — from 15,000 feet to as much as 26,000 feet! Voice, message signaling and DC power are extended. Installation is fast and easy in standard VF card cages at the Central Office.



Model 154
Powerfail
Bypass

POWERFAIL PROTECTION

Keep your phone lines operational during emergencies. Inbound and outgoing communications are maintained during emergencies. Calls that are in progress are not lost upon restoration, and power is restored only after lines go idle.

The Model 154 unit connects to central office lines directly to protect telephones during interruptions.

- 48 VDC operation
- provides auto ground start
- 3 methods of initializing timer: manual, auto sensing or remote

The Model 154A provides the same functionality as the 154 but it is rack-mountable and can be ordered with its own plug-in power supply.

DEESLINK



Remote Access
Model 340

DeesLink is a secure, programmable remote access device. DeesLink provides secure access to your office

systems with complete password protection against unauthorized use.

With DeesLink you can allow multiple users access to your communication system with their own individual profiles and user features are programmable. Profiles in non-volatile memory. DeesLink supports one user per line and allows up to 8 different user profiles.

MOUNTING BRACKET



Model 106

For all of the MDC adapters the Model 106 mounting bracket allows for vertical installation in a rack or cabinet. Saves time and space.

by:

COMMUNICATIONS

063

2003

Call Monitoring and Call Recording Solutions



Xtension Recorder



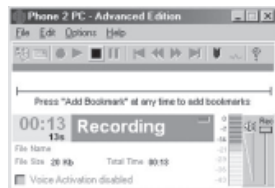
CM-30, CM-10 & CMX-300 Call Monitoring Units



MRI-320 Recording Interface



MRI-321



Phone 2PC Call Recorder

Do you have an application question?
Call Dees at 1-800-654-5604.
We'd be happy to talk with you.

Digital Call Recorder for Nortel platforms

Xtension Recorder simply connects in line with a 2000, 3000 or 7000 Nortel digital telephone and plugs into the USB port on any PC. Xtension Recorder's software captures and displays Caller-ID and provides flexible record and playback options.

Improve agents' performance through Live Monitoring

With Dees' Service Observing Units you can easily monitor calls from your telephone and, when necessary, join in on the call to offer assistance. It's ideal for training and evaluating telephone sales and service representatives. Nothing can be heard by either party on the line (tone alert is optional). The CM-10 lets you monitor up to 10 lines; the CM-30 handles 30 lines and is expandable to 90 lines by adding CMX-300 Expanders. They can be used on Centrex, PABX, key system, and C.O. lines.

Call recorder interface for M1/SL-1 PBXs or Norstar key systems

The MRI-320 offers line selectability when recording from Meridian Digital Terminals or a Norstar Key System. One MRI-320 will interface 4 telephone sets to a multi-channel voice recorder. Line selectability, audio gain adjustment, diagnostic control and self testing ensure quality performance and reliability.

¹ compatible with M1, SL-1 and SL100 PBXs, and Norstar Key Systems. M1, SL1 and Norstar are trademarks of Northern Telecom.

Installation Kit

The MRI-321 is a complete termination kit for connecting the MRI-320, it includes a 6' 25 pair connectorized cable with a bix block mounting.

Call Recording

The Phone 2PC Recorder uses digital recording technology to provide individualized recording capabilities from any telephone. Phone 2PC software resides on your PC, providing an easy user interface for management of recordings. Features provided by the Phone 2PC are digital recording, autosaving, record on demand or full time recording, emailing of recorded file, voice annotation, bookmarks, archiving to disk or CD and instant playback.

Today's
Telecom
Challenges

Remember Dees when

comes to the finishing touch

on your communications system

Whether it's as simple as making

your telephone ring extra loud

or as advanced as adding quality

monitoring in a call center

Dees has what you need

to make your system complete